



Information – Training – Awareness



## Alternative Fuels and Alternative Propulsion

**Think about alternative propulsion -  
think about a clean and prospering environment!**

The project SU:GRE-sustainable green fleets supports the take up of efficient ultra low emission cars. Economic as well as ecologic aspects are covered. We show the way to successful operational expertise and provide overview and insight:

- On-line content (Alternative Fuel Directory, fuel station locator and cases describing the experience fleets have made)
- Workshops and Training Events and also site visits
- Helpdesk splitted into several domains

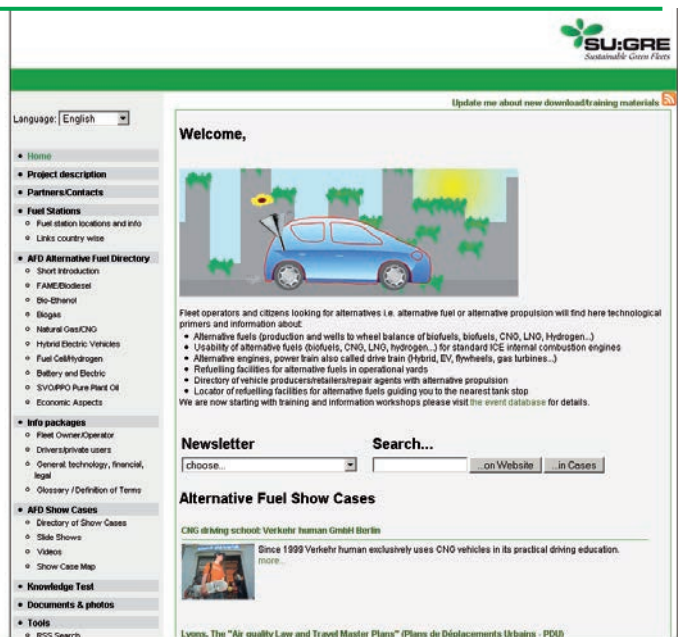
The website gives the links to useful information, contacts and upcoming events. You may also test your knowledge about alternative propulsion or download materials or photos.

Visit <http://www.greenfleet.info>.

## AIMS OF SU:GRE

- Generate a positive attitude for alternative propulsion techniques and alternative fuels
- Promote the take up of best cases, increasing the share of alternatively propelled vehicles amongst fleets and private cars
- Develop an implementation plan for an integrated alternative propulsion policy
- Build a concise knowledge base for efficient and effective dissemination
- Present good examples of operating and enabling the build up of green fleets – leadership by example.

Following the directive 2003/30/EC (the so called bio-fuel directive) the aim is to substitute more than 20% of the fossil fuels by 2020.



[www.greenfleet.info](http://www.greenfleet.info)

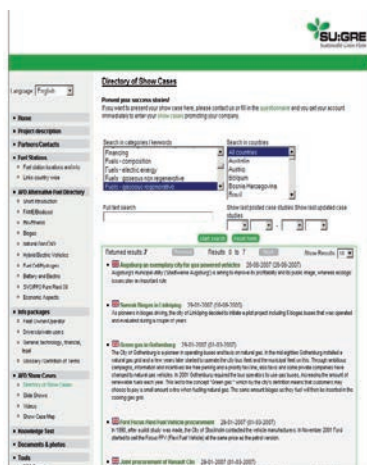
## SU:GRE SERVICES

### ALTERNATIVE FUEL DIRECTORY AFD

The AFD list shortly the characteristics of each fuel type. With the help of this briefing you are able to start talks with vehicle salespersons and fuel suppliers. We cover all fuel not restricted by their implementation roadmap.

### SHOW CASES

The show cases give evidence about successful implementations. We have enlarged the ELTIS database adding descriptions of conversions to alternative fuels. You may search using categories or using terms.



BTW: You can search the whole sugre site using the form at the bottom of the vertical menu if you search for some very specific info.

### REFUELLING STATION LOCATOR

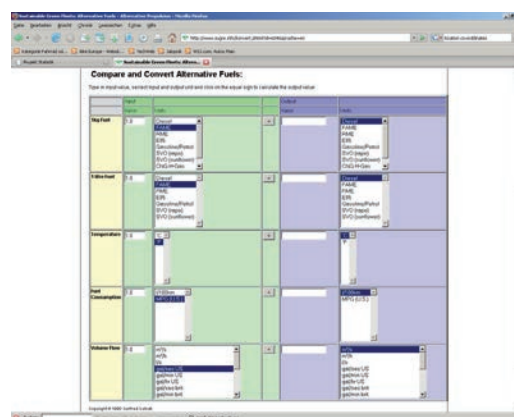
The SU:GRE web site features a tool providing precise maps of the fuelling stations. You may select the fuel type and zoom and pan using google maps.

### QUIZ

If you want to test your knowledge about alternative fuels you can do it on line. The quiz provides detailed info.

### CONVERSION UTILITY

If you want to know how many litres of E85 equal one litre of gasoline in terms of energy content you can use our tool. There are conversions of volume and mass for the different fuel types.



# PROJECT RESULTS

## NEWS

We are scanning frequently different feeds, blogs and media coverage. So we can point you to new vehicles on the market or report from incentives for users of alternative fuel vehicles.

## EVENTS

We are listing events in the field of alternative fuels, like conferences etc.

## DECISION SUPPORT TOOL

The decision support tool allows you to restrict your searching to fuels which fit your application. After choosing you also get some hints for the implementation.

## LINKS/ADDITIONAL INFO

Additionally to the AFD there is a section structures for commercial and private fleets where you find everything about procuring and running vehicles, refuelling etc.

## HELPDESK

We have nominated experts for every topic. You can contact them via web form, or simply call them on the phone.

## DOWN LOAD SECTION

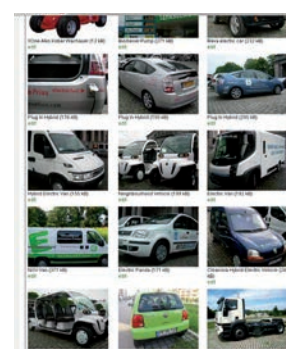
The down load section offers you training materials or photos you can use for your own activities

**1. Know your requirements:** Passenger Transport/Buses, Logistics

**2. Choose Fuel Category:** Neighborhood, inner city line, Regional transport, Trans European

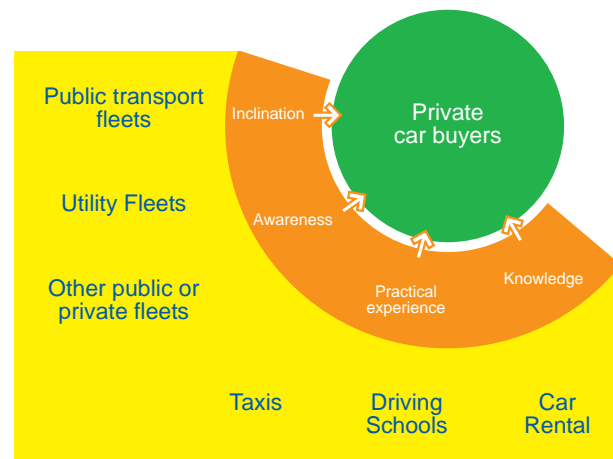
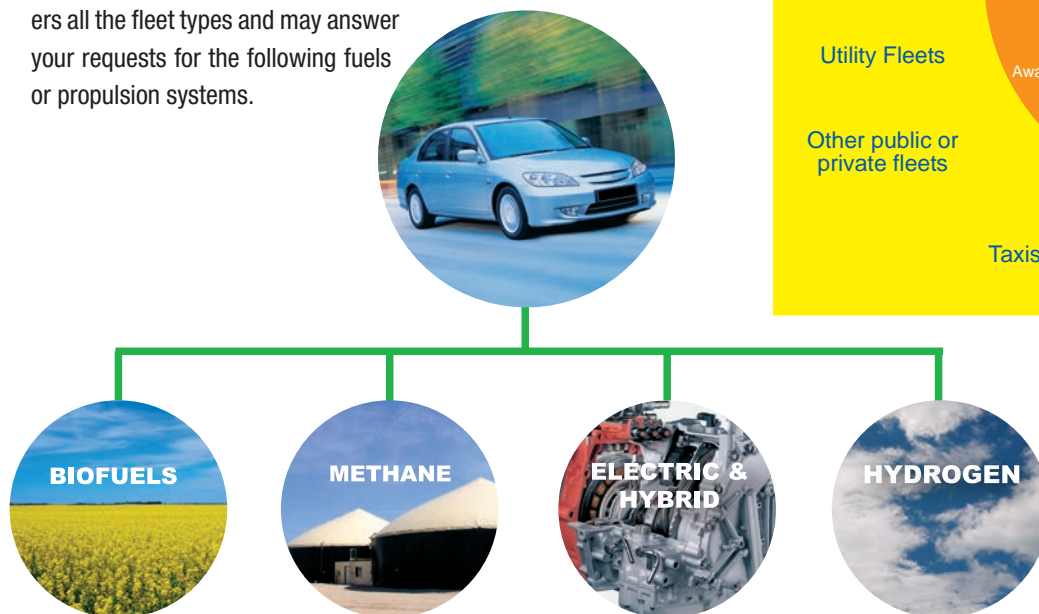
**3. Consider Fuel:** Fuel Ethanol (E15, E5, E0, E85)

**4. Consider Recommendations:** Procurement, Refuelling, Driving, Maintenance



## WHAT FUELS WE COVER

SUGRE (Sustainable Green Fleets) covers all the fleet types and may answer your requests for the following fuels or propulsion systems.



## PARTNERS

- **Austria:** Graz Forschungsgesellschaft Mobilität  
Austrian Mobility Research (FGM-AMOR)  
Project leader: Gerfried Cebrat  
Schönaugasse 8a, A-8010 Graz  
email: sugre@fgm.at  
tel.: +43 316 810451 35  
skype: fgm\_dw35
- **Austria:** Graz / Austrian Mobility Research FGM-AMOR
- **Portugal:** Local Energy Agency of Almada AGENEAL
- **Slovenia:** Ljubljana / ALIANTA
- **Italy:** Rome / Agency for Mobility ATAC
- **Greece:** Aristotele University Thessaloniki AUTH
- **Spain:** Madrid / Energía y Medio Ambiente BESEL
- **Germany:** City of Bremen
- **Hungary:** Budapest University of Technology and Economics,  
Department of Environmental Economics BUTE
- **Italy:** Energy Agency of Torino
- **Romania:** Bukarest / URTP
- **Greece:** Thessaloniki / German-Hellenic Chamber of  
Industry and Commerce DGHK
- **Netherlands:** Rotterdam / ECORYS Nederland BV
- **Germany:** Berlin / Natural Gas Driving School EFA
- **Austria:** City of Graz, Stadtbaudirektion - European Programmes  
and International Cooperation Unit and Department of Environment
- **Austria:** Graz / Public Transport Company of Graz GVB
- **Germany:** Heidelberg / Institute for Energy and  
Environmental Research Heidelberg IFEU
- **Sweden:** Stockholm / WSP
- **Bulgaria:** Sofia / IVECOL Co.
- **Portugal:** Municipal Energy and Environment  
Agency of Oeiras OEINERGE
- **UK:** Berkshire / Thames Valley Energy TVE
- **Slovenia:** Celje / City of Celje
- **Poland:** Warsaw University of Technology, Faculty of  
Materials Science and Engineering WUT-FMSE
- **Iceland:** Reykjavik / Icelandic New Energy Ltd. INE
- **Germany:** Bremer Energie-Konsens GmbH BREK
- **France:** Lyon / Rhônalpénergie-Environnement RAEE
- **Slovakia:** Bratislava / Slovnaft VURUP, a.s.



## Information – Training – Awareness

### PROJECT BRIEF

SUGRE (Sustainable Green Fleets) is an accompanying measure that promotes alternative propulsion and mainly focuses on fleets, but not only with regards to land transport.

